



# ➤ OPTIMIZATION

www.gams.com ◀

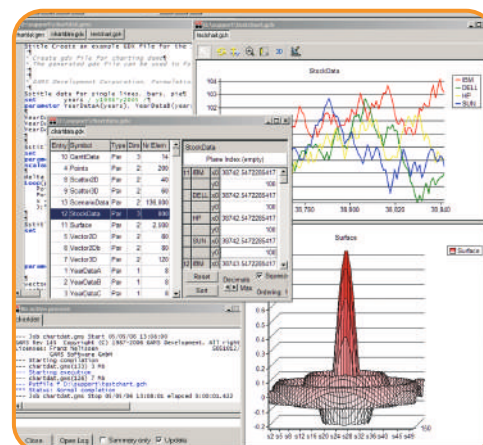
## GAMS

### High-Level Modeling

The General Algebraic Modeling System (GAMS) is a high-level modeling system for mathematical programming problems. GAMS is tailored for complex, large-scale modeling applications, and allows you to build large maintainable models that can be adapted quickly to new situations. Models are fully portable from one computer platform to another.

### State-of-the-Art Solvers

GAMS incorporates all major commercial and academic state-of-the-art solution technologies for a broad range of problem types.



GAMS Integrated Developer Environment for editing, debugging, solving models, and viewing data.

### AGMEMOD – Agri-food projections for EU member states

- An econometric, dynamic, multi-product partial equilibrium model and additional tools.
- Allows projections and simulations in order to evaluate measures, programmes and policies in agriculture at the European Union (EU) level as well as at the (candidate) member states level.
- Data and all equations of the country models are stored in spreadsheets.
- AgMemod2GAMS checks data as well as the specified equations (distinguishing 17 different types of errors) and automatically generates GAMS code (more than 145,000 lines).
- Data and model experts are working with a consistent and stable instance of the models.
- xxGraph compares scenarios and makes all results available in spreadsheets.

#### USA

##### GAMS Development Corporation

1217 Potomac Street, NW  
Washington, DC 20007, USA

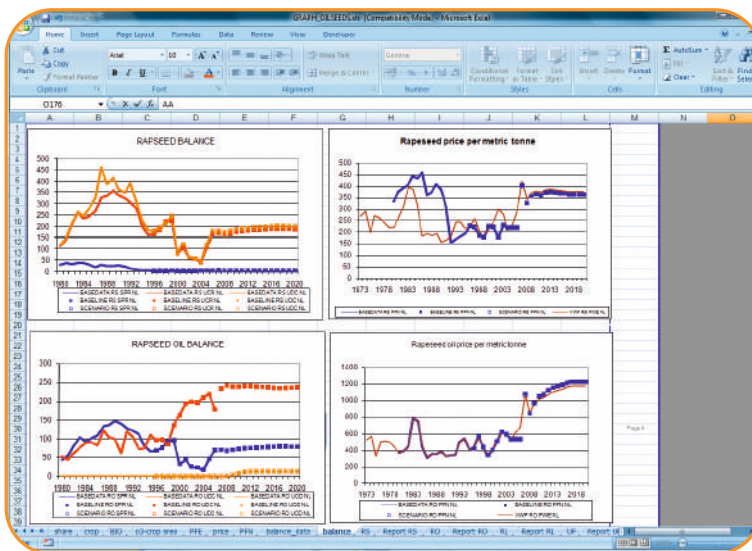
phone  
+1-202-342-0180  
fax  
+1-202-342-0181  
mail  
sales@gams.com  
web  
http://www.gams.com

#### Europe

##### GAMS Software GmbH

Eupener Strasse 135-137  
50933 Cologne, Germany

phone  
+49-221-949-9170  
fax  
+49-221-949-9171  
mail  
info@gams.de  
web  
http://www.gams.de



For more information please visit: <http://www.tnet.teagasc.ie/agmemod/>