



> OPTIMIZATION

www.gams.com <

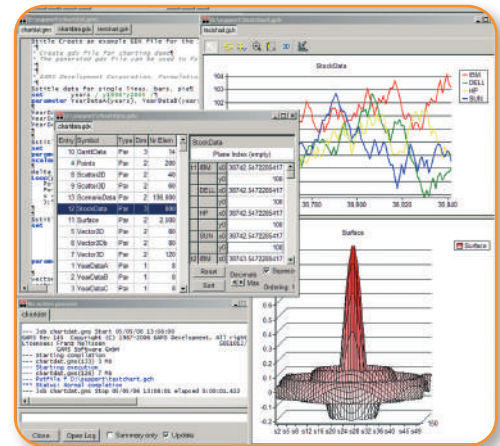
GAMS

High-Level Modeling

The General Algebraic Modeling System (GAMS) is a high-level modeling system for mathematical programming problems. GAMS is tailored for complex, large-scale modeling applications, and allows you to build large maintainable models that can be adapted quickly to new situations. Models are fully portable from one computer platform to another.

State-of-the-Art Solvers

GAMS incorporates all major commercial and academic state-of-the-art solution technologies for a broad range of problem types.



GAMS Integrated Developer Environment for editing, debugging, solving models, and viewing data.

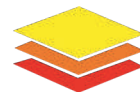
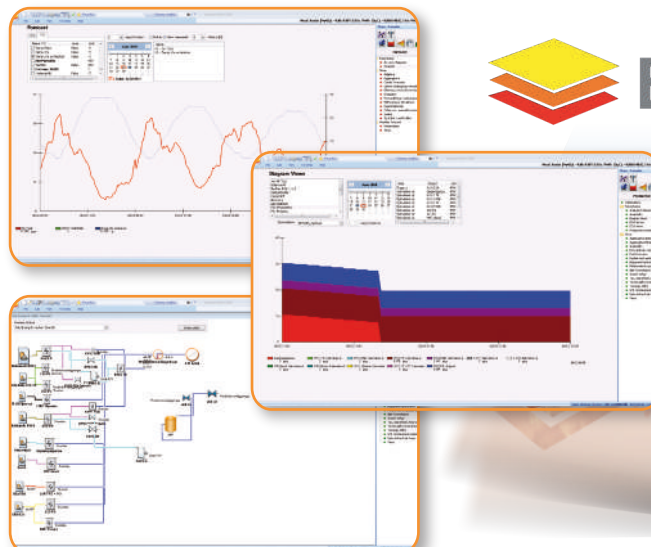
ENERGY OPTIMA 2000 - The Optimal Software Tool for Energy Producing Companies

Energy Optima 2000, developed by Energy Opticon, is successfully used for economical optimization of energy production and accurate load forecasting by customers in Sweden, Finland, Denmark, Germany and the Netherlands. The use of the software tool can result in

a reduction of operational costs with 2-10 %, especially for companies with co-generation production. It is a modern and user-friendly tool with graphs and tables in an up-to-date and logical environment that is adapted to the latest versions of Microsoft Windows and Office.

Energy Opticon and Energy Optima 2000 provide:

- Experience of over 20 years and know-how for energy producing companies
- Economical computer optimization of the energy production
- Seven main modules for
 - System
 - Measurement
 - Load forecasts
 - Long term optimization
 - Electricity trading
 - District heating as thermal storage
 - Optimization



Energy Opticon



USA

GAMS Development Corporation

1217 Potomac Street, NW
Washington, DC 20007, USA

phone
+1-202-342-0180
fax
+1-202-342-0181
mail
sales@gams.com
web
<http://www.gams.com>

Europe

GAMS Software GmbH

Eupener Strasse 135-137
50933 Cologne, Germany

phone
+49-221-949-9170
fax
+49-221-949-9171
mail
info@gams.de
web
<http://www.gams.de>

For further information about this application please contact info@opticon.se